

La importancia de la mapa catastral y los mejores usos de la cartografía en el gobierno electrónico

Gerda Schennach

Oficina central de BEV (Agencia Federal de Metrología, Catastro y Cartografía, Austria)
Expresidente de Comisión 7 de FIG (Federación Internacional de Geómetras)

Austria – facts and figures



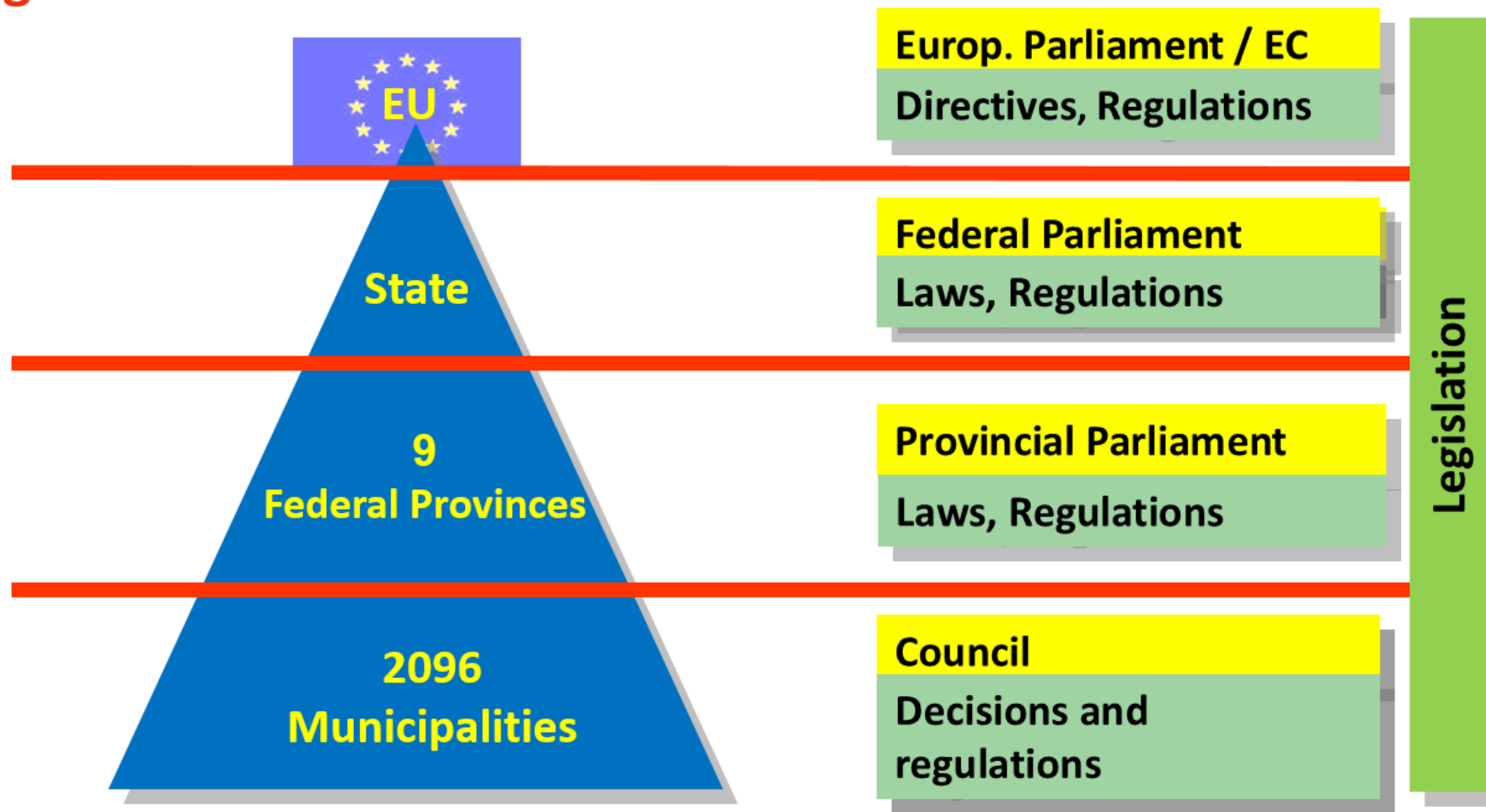
- 8.8 mio inhabitants, 84 000 sqkm
- federal state
9 provinces d/ 94 districts
2096 municipalities
- 11 mio land parcels (cadastre)
3 mio property units (land register)
- BEV: national Mapping and Cadastral Agency
- 41 Cadastral offices
- 140 Land registry offices at local courts

e-government services

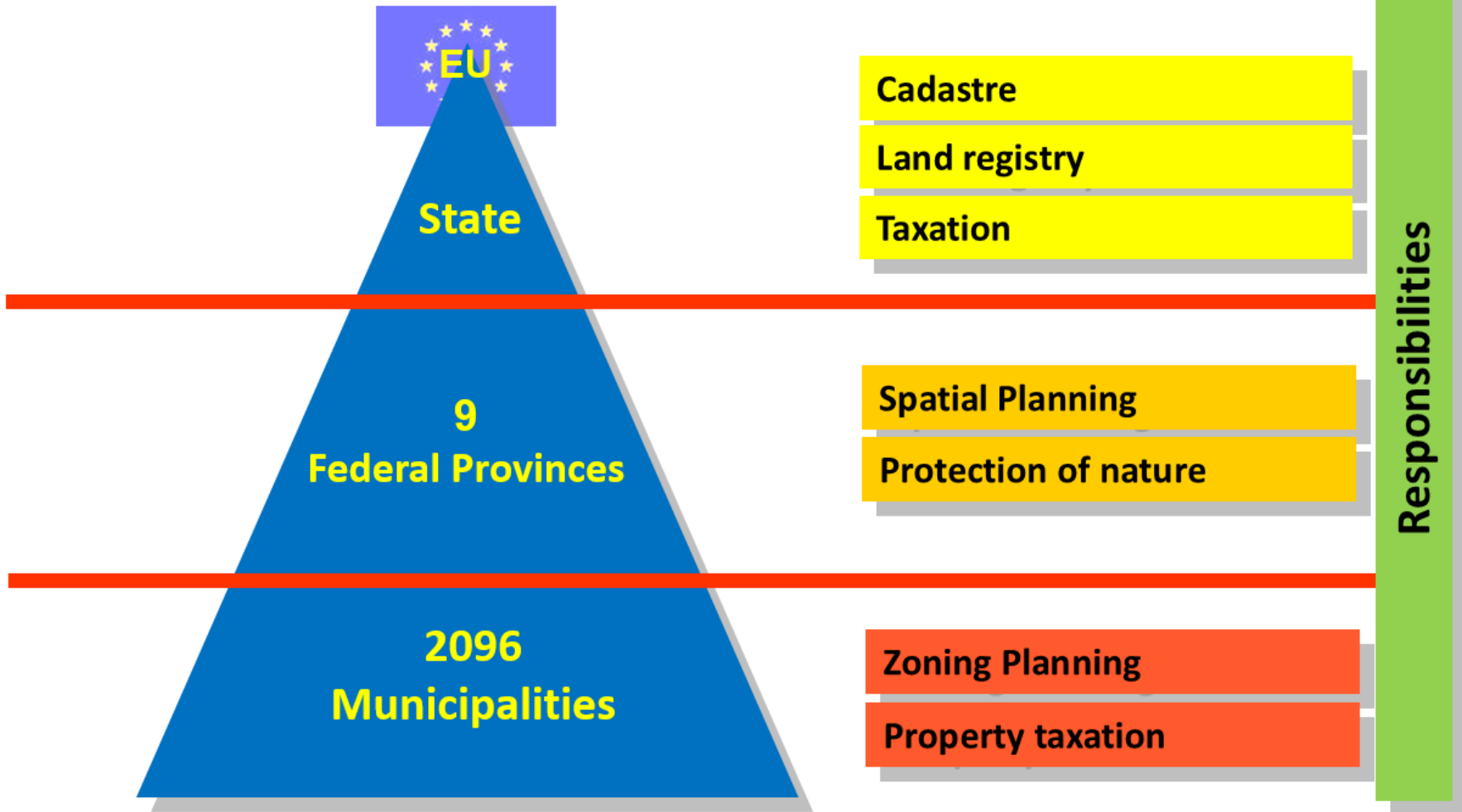
- www.oesterreich.gv.at
- www.bev.gv.at



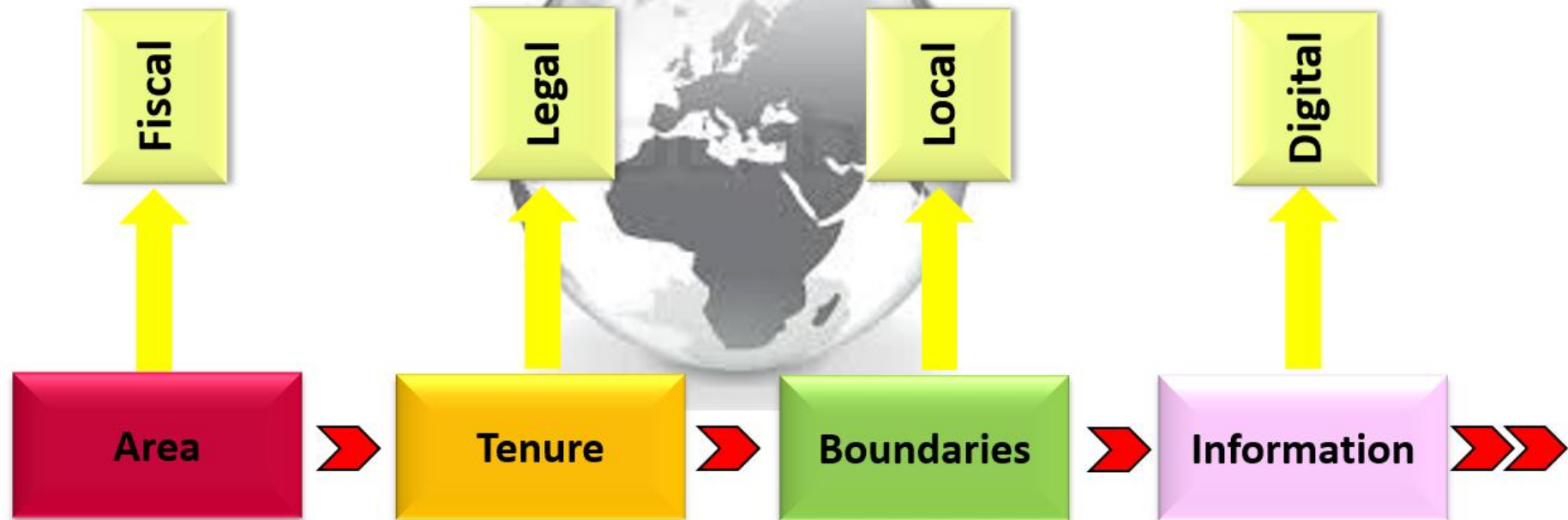
Legislation in Austria



Legal subjects linked to cadastre



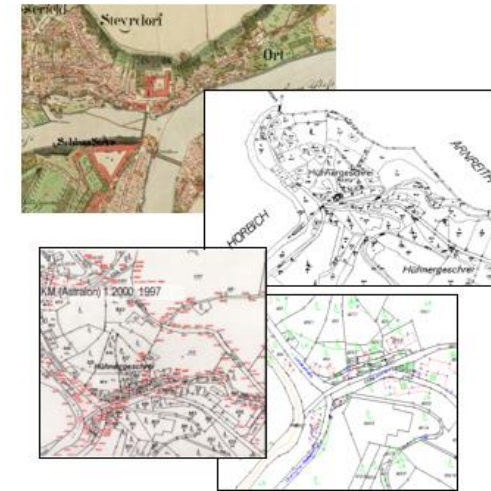
From area to location to information



© Schennach

From land tax cadastre

- Land Tax Act 1817
- basis for **taxation** of agricultural land
- **graphic** documentation in the cadastral map
- **descriptive** information in tables

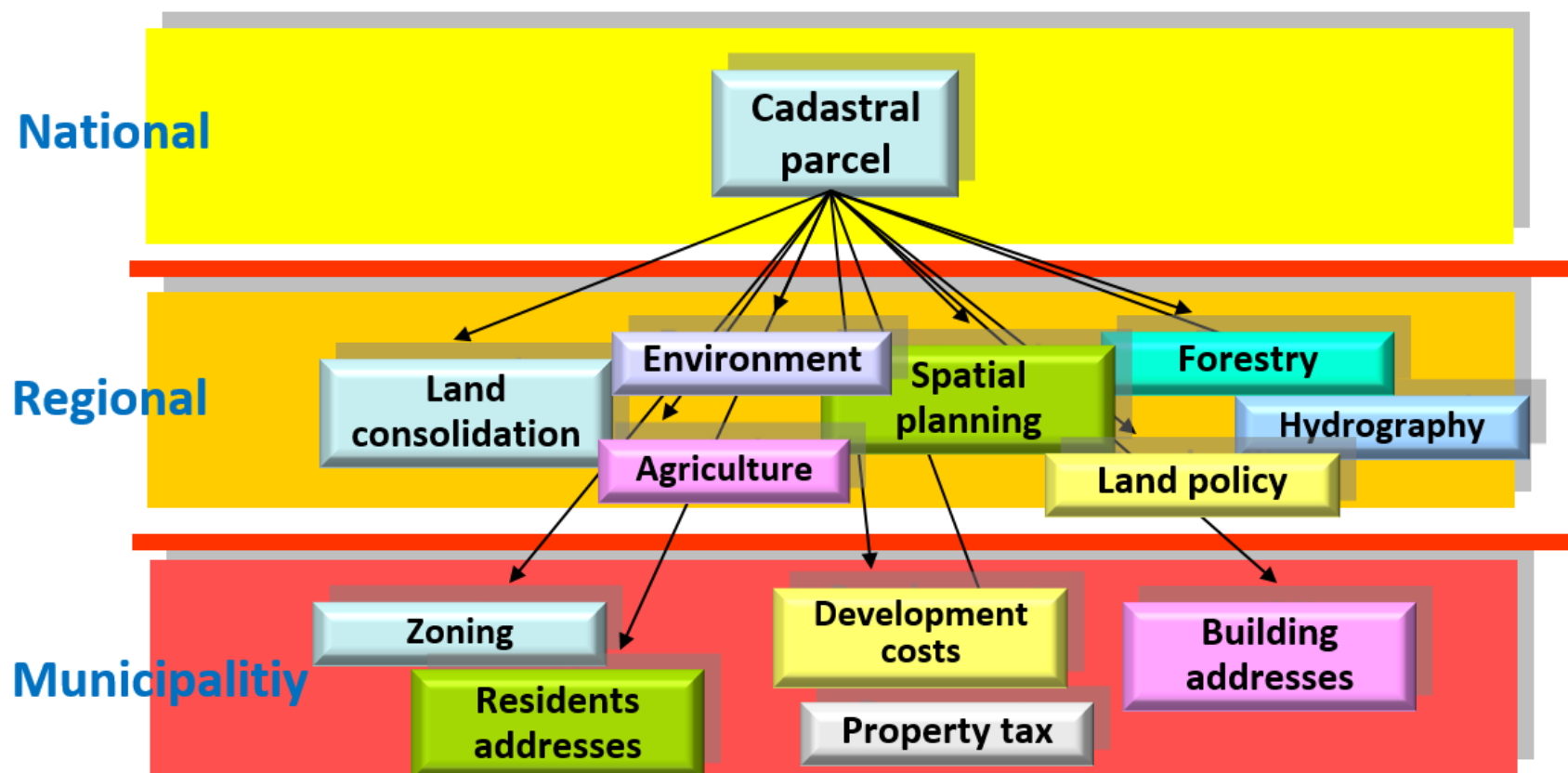


... to cadastre of boundaries (legal cadastre)

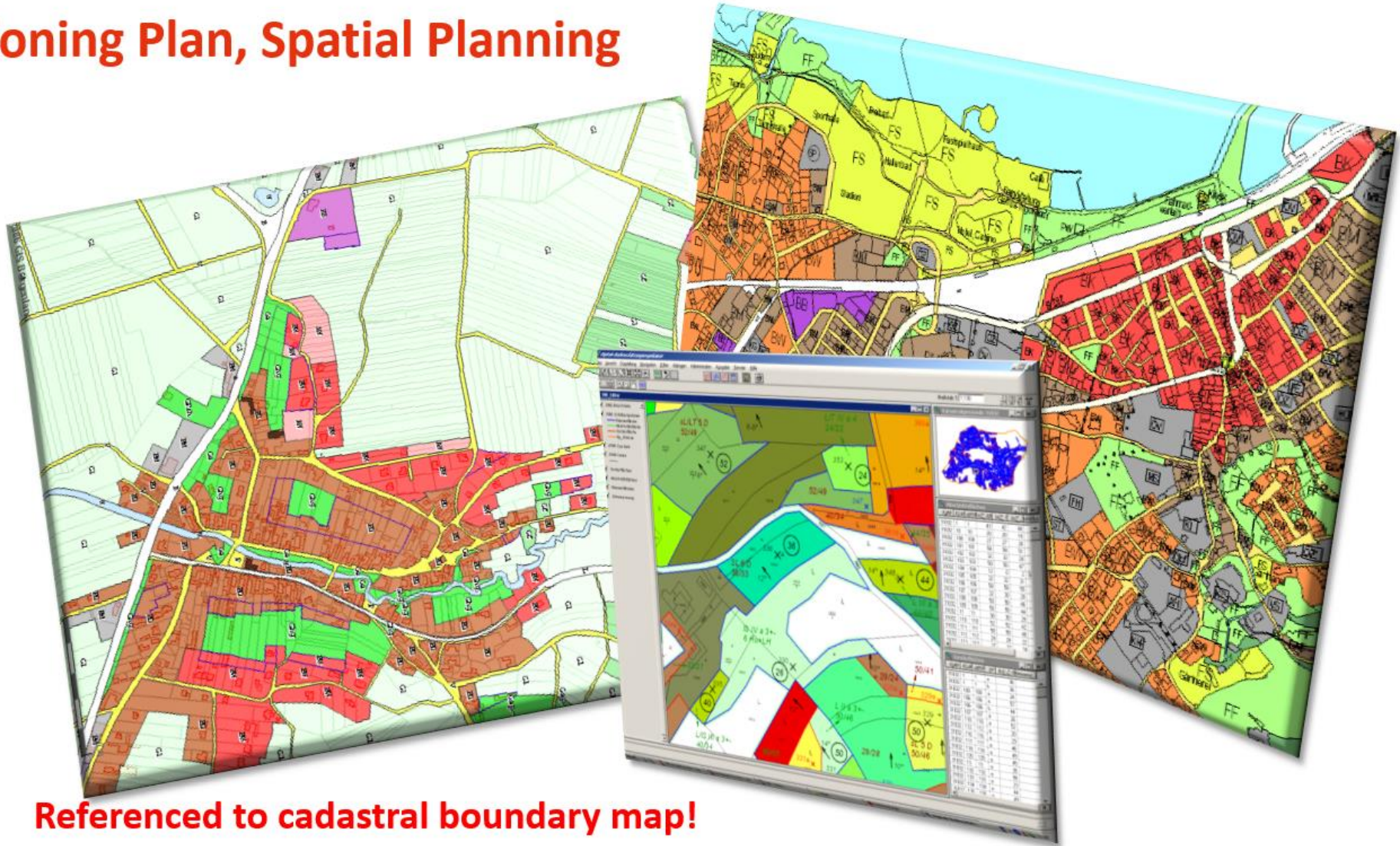
- negotiation with **owners** > signature by owners > surveying (coordinates) > surveying document (PPP model)
- parcel boundary is **legally binding**
„Cadastral of coordinates“
- **geometric** cadastral map



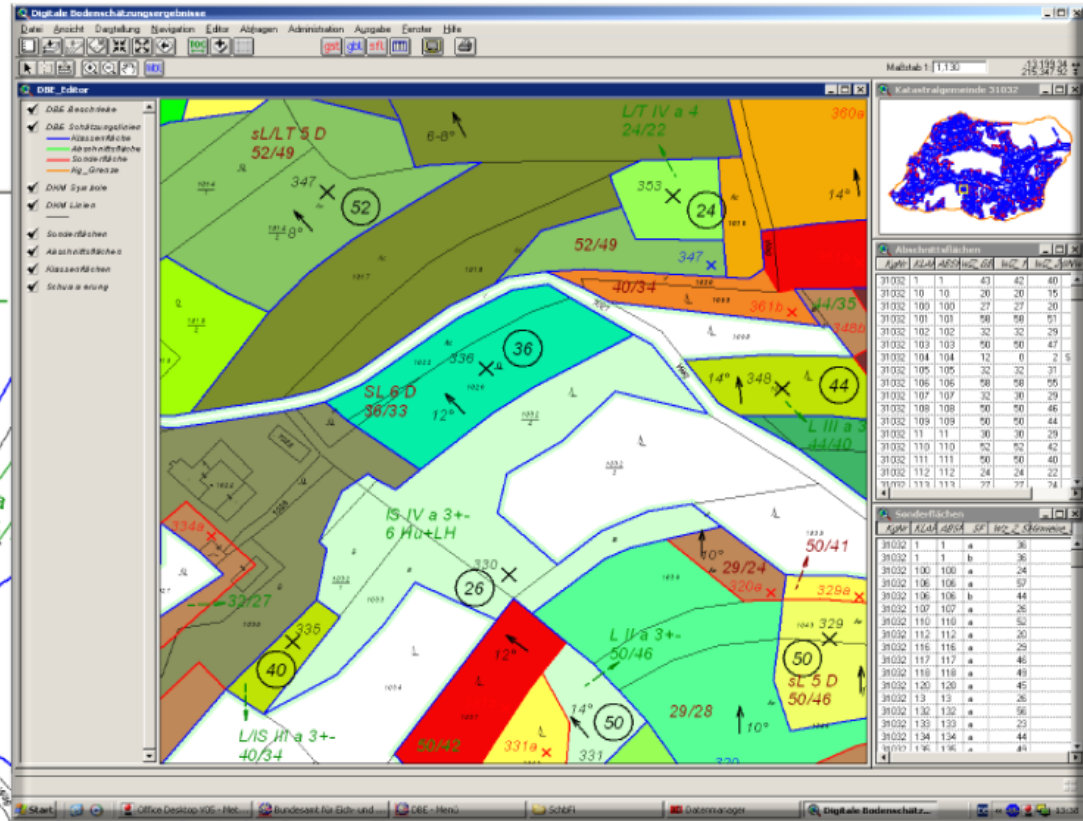
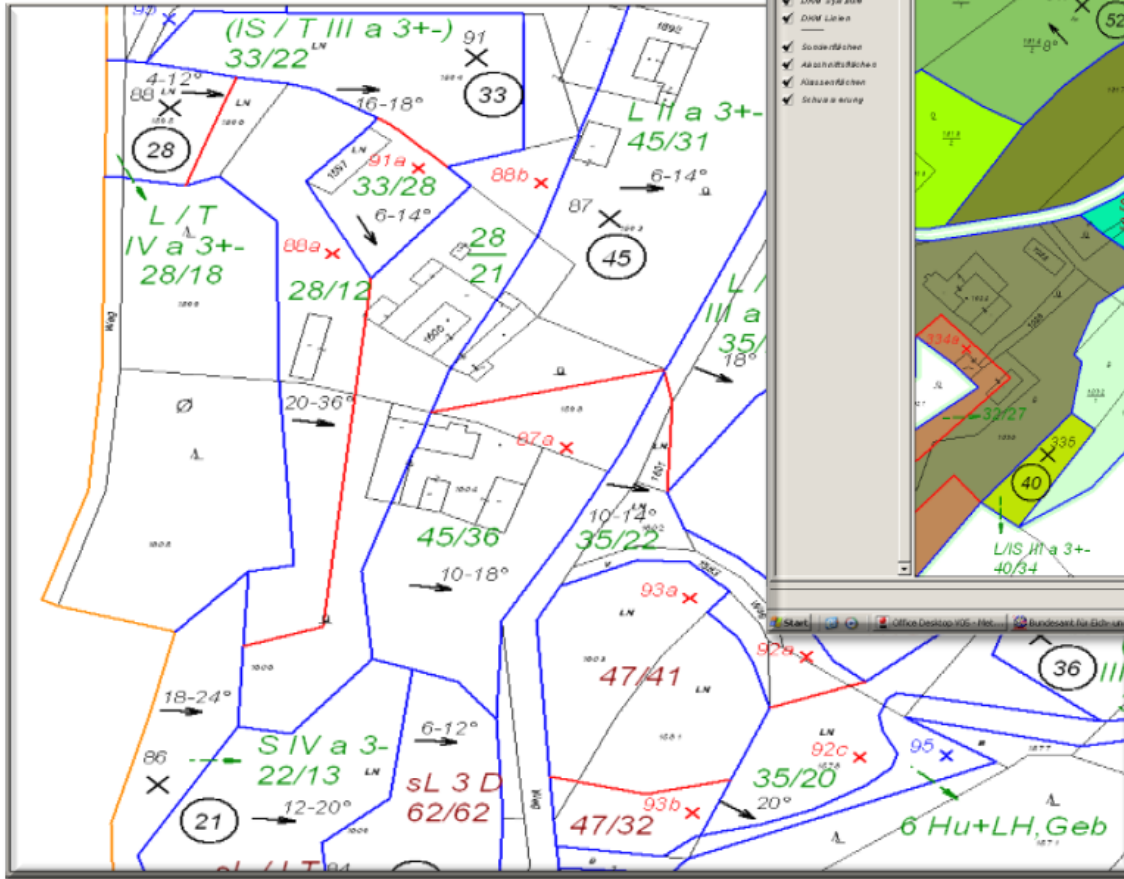
Legal importance of cadastral parcel in public administration



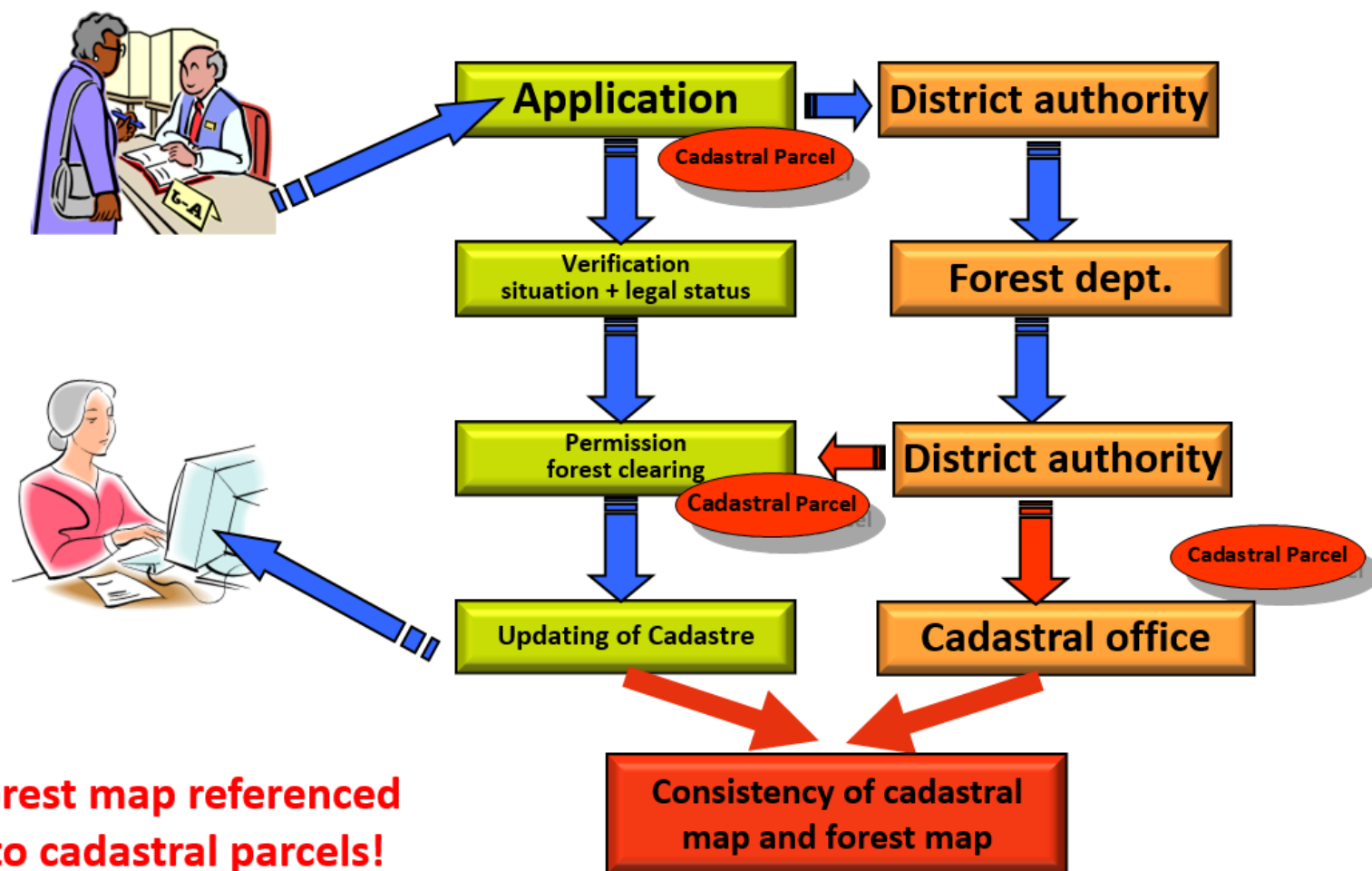
Zoning Plan, Spatial Planning



Soil evaluation



Workflow with forest authorities



**Forest map referenced
to cadastral parcels!**

Austrian address register - visualisation



Austrian address register – web service

see
www.adressregister.at



The screenshot shows the website's header with the logo and a descriptive paragraph. Below the text is a diagram with a central circle containing the word "ZIEL" in red. Four arrows point towards this circle from the directions: top (labeled "Registrierung"), right (labeled "Bestellung"), bottom (labeled "Produktinformation"), and left (labeled "Adresssuche"). The word "ZIEL" is also written in a large, stylized font across the bottom right of the diagram area, partially overlapping a faint map background. The browser's address bar shows "https://www.adressregister.at".

Das Adressregister gibt österreichweit authentisch alle von den Gemeinden offiziell vergebenen Adressen wieder. Damit ist es die Referenz der Adressen Österreichs bezüglich Adressierbarkeit, Schreibweise, Ordnungsnummernvergabe und räumlicher Zuordnung. Dieser zentrale Adressdatenbestand ist Teil des Grenzkatasters (§9a VermG) und wird von den Gemeinden und Städten mit den im Vermessungsgesetz angeführten Merkmalen über eine zentrale Meldeschiene geführt und aktualisiert. Das BEV - Bundesamt für Eich- und Vermessungswesen gibt die Adressen in verschiedenen Ausprägungen ab. Jede Adresse hat zusätzlich zu vielen weiteren Informationen einen eindeutigen Schlüssel (Adresscode) und eine exakte räumliche koordinative Zuordnung (Geocodierung).

Registrierung
Bestellung
Produktinformation
Adresssuche
ZIEL
ZIEL führend

International co-operation and the role of FIG



- ▶ independent platform for public-private-academic-business
 - ▶ coordinator of professionals and activities of surveyors
 - ▶ exchange of expertise and knowledge
 - ▶ users are local, technology is global
- ▶ opportunities to actively contribute to Commissions, WGs, TFs
 - ▶ development of standards (LADM, e.a.) on expert level
 - ▶ mediator for different interest groups
- ▶ cooperation with UN-GGIM WGs and regional UN-GGIM activities
- ▶ facilitator of developments / contact point for experts in some countries
 - ▶ **FIG members are integrated into opinion building processes**



The screenshot displays the FIG website's 'Members' page. At the top left is the FIG logo and its name in three languages: 'International Federation of Surveyors', 'Fédération Internationale des Géomètres', and 'Internationale Vereinigung der Vermessungsingenieure'. To the right, there is a search bar and a 'PRESENTING FIG CORPORATE MEMBERS' banner. A navigation menu below the logo includes 'Home', 'News', 'Organisation', 'Members', 'Resources', 'Partners', 'Foundation', 'Events', 'About FIG', and 'Highlights'. A secondary menu lists 'FIG Members', 'Associations', 'Corporates', 'Academics', 'Affiliates', 'Correspondents', 'Honorary Presidents', 'Honorary Members', and 'Honorary Ambassador'. The main content area features a world map with member countries highlighted in red, orange, and green. Below the map is the text 'Locate members from a map!'. On the right side, there are social media sharing icons and a list of links: 'FIG Members', 'Information on Membership', 'Benefits of being a Member', and 'To become a member'. A yellow box at the bottom right of the screenshot contains the URL www.fig.net.

FIG Commission 7 – Cadastre & Land Management Cadastral Template 2.0



FIG Commission 7 – Cadastral Template 2.0 - Participation

Cadastral Template 2.0
Home | Countries | Comparisons | Documents | About |

Documents Last modified on 06-Oct-2014

Questionnaire

Questionnaire in English: [pdf \(155k\)](#) [doc \(233k\)](#)
 Plantilla en Español: [pdf \(151k\)](#) [doc \(235k\)](#)
 Questionário en Portugues: [pdf \(150k\)](#) [doc \(235k\)](#)

Publications

Stuedler, D. and Rajabifard, A. (2014). Launch of Cadastral Template 2.0. Annual meeting of FIG-Commission 7, Québec, Canada, 7 Oct. 2014. [pdf \(880k\)](#)

Rajabifard, A. and Stuedler, D., Aien, A., and Kalantari, M. (2014). The Cadastral Template 2.0, From Design to Implementation. FIG Congress 2014, Kuala Lumpur, Malaysia, 16-21 June 2014. [pdf \(1.22M\)](#)

Stuedler, D., Williamson, I.P. and Rajabifard, A. (2004). Worldwide Comparison of Cadastral Systems - A Cadastral Template. GIM-International, May, pp. 40-43. [pdf \(305k\)](#) (GIM-International)

Stuedler, D., Williamson, I.P., Rajabifard, A. and Enemark, S. (2004). The Cadastral Template Project. FIG-Working Week 2004, Athens, Greece, May 22-27, TS 1.2: Good Practice in Land Administration and Cadastre, 15p. [pdf \(305k\)](#)

Stuedler, D., Rajabifard, A. and Williamson, I.P. (2004). A worldwide comparison of cadastral systems. GIS Development, April. [htm](#)



[www.cadastraltemplate 2.0](http://www.cadastraltemplate2.0)

Cadastral Template 2.0
Home | Countries | Comparisons | Documents | About |

Countries

Participating countries

Asia	Europe	Africa	North America	South America	Oceania
Brunei	Austria	Eritrea	Canada	Argentina	Australia
Cambodia	Belarus	Ethiopia	Mexico	Colombia	Fiji
China	Belgium	Namibia		Trinidad and Tobago	Kiribati
Hong Kong	Bulgaria	South Africa		Venezuela	New Zealand
India	Cyprus	Tanzania			
Indonesia	Czech Republic				
Iran	Denmark				
Israel	Finland				
Japan	Germany				
Jordan	Hungary				
Macao	Iceland				
Malaysia	Latvia				
Nepal	Lithuania				
Pakistan	Netherlands				
Philippines	Norway				
Singapore	Poland				
South Korea	Slovenia				
Sri Lanka	Spain				
Thailand	Sweden				
Turkey	Sweden				
Uzbekistan	Switzerland				
	UK				

Cadastral Template 2.0 – Join the service!

Comparism of countries

Cadastral Template 2.0

Home | Countries | Comparisons | Documents | About |

Comparisons


Select Regions Select Countries

South America Argentina Remove all selected countries

Selected countries are listed here: Query: Select a Query

- Colombia
- Argentina

1.4 Approach for establishment of cadastral records



Country	Approach for establishment of cadastral records
1 Colombia	sporadic
2 Argentina	systematic

Muchas gracias!

